



REGIONE CAMPANIA
COMUNE DI PALOMONTE
PROVINCIA DI SALERNO

progetto : sistemazione e ammodernamento strada
comunale di collegamento tra strade provinciali sp n. 205
e sp 36 b
località: Madonna delle Grazie - Fontana - solici - Vonghia- Canne secche
ed altre

progetto definitivo / esecutivo

COMITENTE
COMUNE DI PALOMONTE

progettazione
UFFICIO TECNICO COMUNALE

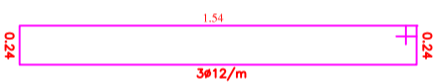
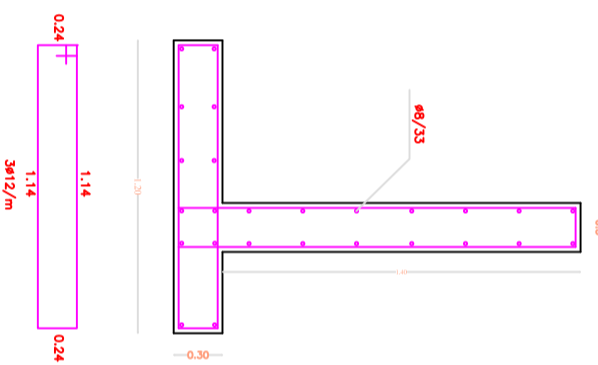
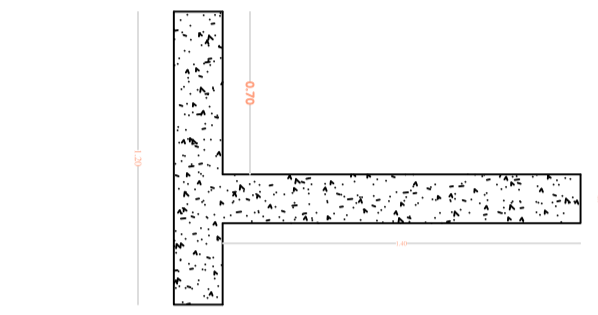
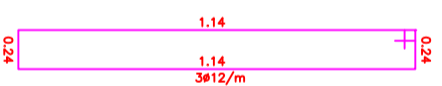
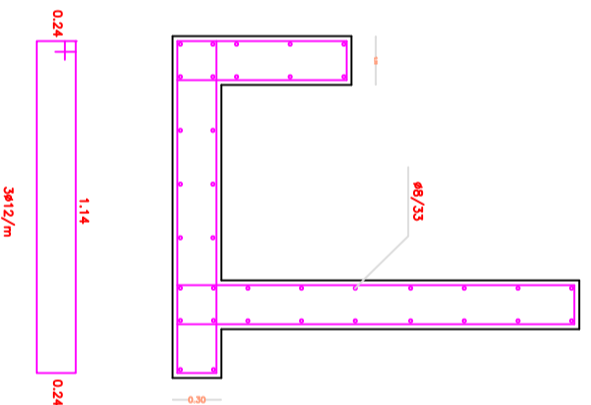
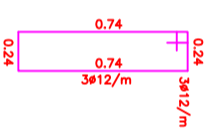
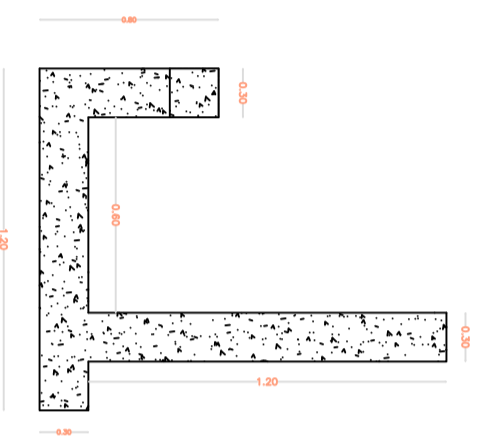
ELABORATO : particolari costruttivi vari -opere ca.-

Codice elaborato: 21
Nome file: Scade

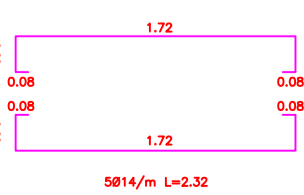
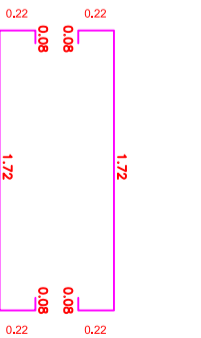
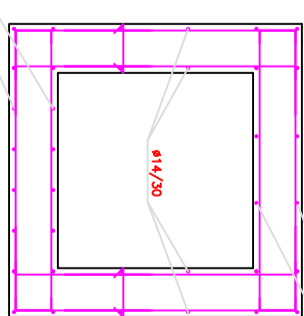
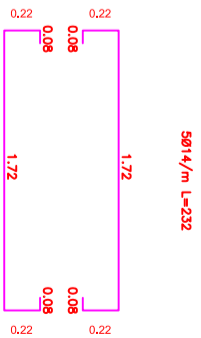
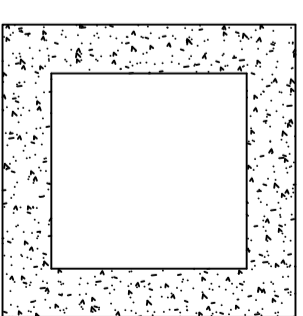
Prodotto da: Confindustria Data

A FORME DI LEGGE DI SERVIZIO LA PROSPETTIVA DI QUESTO LABORATORIO CON INTERO E IMPERSONALE O CONDIZIONE RESPONSABILE A TUTTO SENSO PRESENTA AUTOREZZAZIONE

PARTICOLARE 1



PARTICOLARE 2



PARTICOLARE 3